

Compact 3-Arm

The motorized 3-arm Compact turnstile with its robust, weatherproof powder-coated housing and with an integrated height-adjustable support is well-suited for use in a battery of turnstiles at high-traffic outdoor access points.

Card readers can be installed using an optional reader bracket attached to the housing. Compact also comes in an optional stainless steel version with a fixed height as well as a Compact Plus version with design railings.

A large selection of specialty equipment means it can be tailored to individual requirements.



Features

- Extra compact design
- Height adjustable
- Optional INOX with fixed height
- Pre-assembled on delivery
- Silent running
- Single or bidirectional operation
- Reversible entry direction
- High traffic capacity
- Long service life
- Secure traffic separation
- Integrated LOGITURN® control unit
- Maintenance-free mechanism
- Extensive range of accessories

Applications

- Sports facilities
- Outdoor swimming pools
- Recreational facilities

Models/Options

- 3-arm height-adjustable turnstile
- 3-arm fixed-height INOX turnstile

Options:

- Climb-over/crawl-under protection
- Sensor start
- Grating for mobile setup

Compact 3-Arm

Technical data

Power supply:	230 V ~ / 24V =
Power consumption:	max. 50 VA
Storage temperature:	-40°C to +40°C
Operating temperature:	-20°C to +50°C
Breite/Durchgang:	305 mm / 577 mm
Length:	350 mm
Height:	1.000 - 1.365 mm
Weight:	45 kg
Material:	
Housing:	Steel, powder-coated, optional CrNi steel
Turnstile:	CrNi steel grade 1.4301

Function

In normal operating mode, an electric brake locks the turning arms in place.

The brake is released by the reader system or an optional external manual control so that the arms can turn freely in the appropriate direction.

A slight pressure activates the drive, which rotates the arms 120°. Internal sensors prevent the arms from hitting the person passing through and causing injury.

Once passage is completed, the turnstile sends a signal to the reader. To prevent injuries in case of panic, a slip clutch allows the unit to be activated with a force of at least 40 kN when locked if an alarm is triggered.

Standards & Regulations

CE Machinery Guidelines

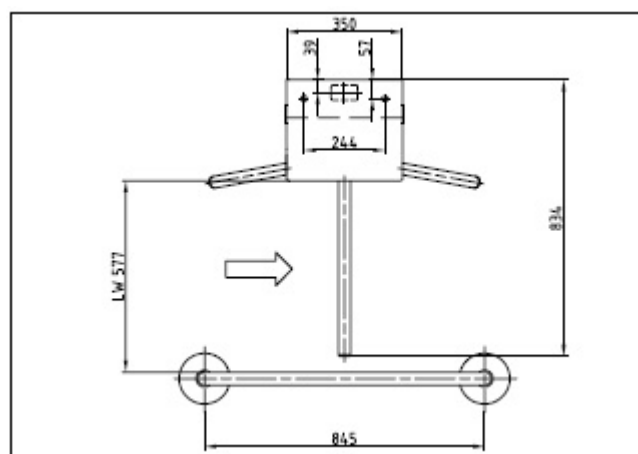
UL 94 V-0

EN 64312 (formally ÖNORM 4150)

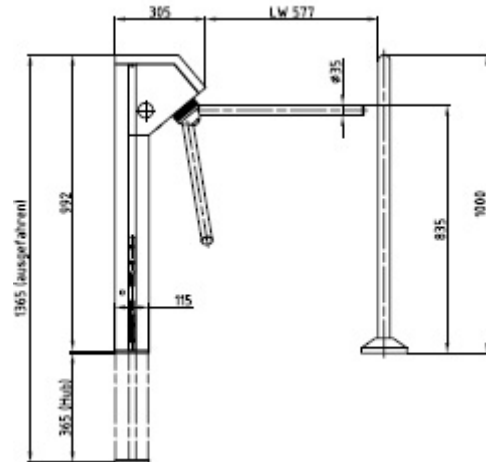
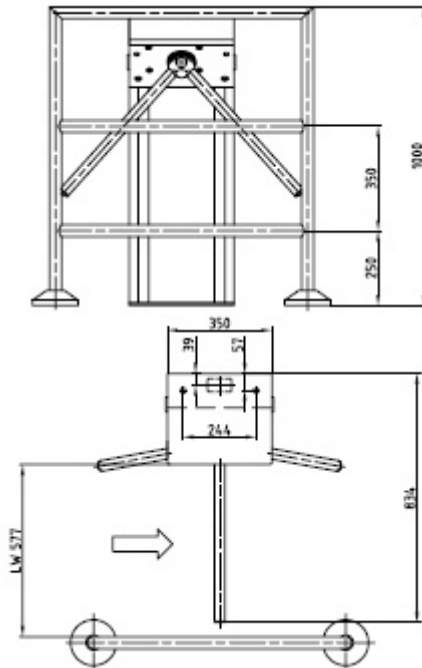
Degree of protection: IP 43 as per EN 60529

Manufacturing standard: ISO 9001

Sample Layout



Dimensions



Models:

- 6COM3AEB:** Compact 3-Arm height-adjustable
- 6COM3AEC:** Compact 3-Arm stainless steel, fixed height

Options:

- 2P412-N:** Touchless sensor start
- 2P414-N:** Light barrier activator
- 2P782-N:** Climb-over/crawl-under protection (Monitors turnstile arms)
- 2P784-N:** Climb-over protection (Monitors turnstile cover and arms)
- 2P783-N:** Climb-over/crawl-under protection (Monitors turnstile body, arms and top)
- 21767-N:** Red/Green signal light, LED 60 mm
- 21763-N:** Release signal LED 60 mm for 2 directions
- 21700-N:** Reader mounting

Electrical Connections

Inputs:

- Reader release, entry direction
- Reader release, exit direction
- Single release button, entry direction
- Single release button, exit direction
- Continuous release switch, entry direction
- Continuous release switch, exit direction
- Stop button

Outputs:

- External entry counter, non-resettable
- External exit counter, non-resettable
- External signal light
- Feedback

Matching Products:

- 21500K:** Grating for mobile setup
- 21510K:** Railings for grating
- 8P408-N:** LOGITURN control panel
- 8P407-N:** Surface mounted housing for control panel
- 8P409-N:** LOGITURN preset counter
- 8P413-N:** Random number generator
- 21692:** Base console for mounting to non-load-bearing substrates

Compact 3-Arm

Sample Quotation

Item	Qty	Text	Price per pc	Total
		<p>3-arm turnstile(s) with electric motor drive, with height-adjustable support, fully assembled, for outdoor installation. Available with clockwise or counter-clockwise rotation or bidirectional operation.</p> <p>Maintenance-free mechanism, integrated LOGITURN electronics. Operates on 24 V direct current from an integrated power supply 1x200 VA, 2x12V, for 230 VAC</p> <p>Option to install or add-on card readers or biometric control devices.</p> <p>Robust, galvanized steel housing with 2-color power-coating. Cover in RAL 9006 (white aluminum), body in white. Bolted directly to load-bearing substrates (e.g., concrete floor) or installed with optional base console on non-load-bearing substrates.</p> <p>Reference product: Gotschlich Model COMPACT 3-Arm with the following optional features:</p> <ul style="list-style-type: none"> <input type="checkbox"/> Integrated optosensors for presence verification (release only when person present) <input type="checkbox"/> Integrated optosensors for detecting misuse due to climb-over or crawl-under <input type="checkbox"/> Housing version in INOX (fixed height) <p>As well as the following accessories:</p> <ul style="list-style-type: none"> <input type="checkbox"/> Red/Green signal lamps as lane or card release indicator <input type="checkbox"/> Robust power supply 1x 200 VA, 2x12V, for 230 V 50-60 Hz <input type="checkbox"/> Bracket for mounting a card reader <input type="checkbox"/> External control panel for manual turnstile operation <input type="checkbox"/> Base console for mounting the turnstile to non-load-bearing substrates <input type="checkbox"/> Grating for mobile turnstile setup outside, including optional railings <input type="checkbox"/> Stainless steel frame platform and inserted honeycomb rubber for mobile setup of turnstile inside, incl. railing 		